

## Accommodation

Bridge:  
Cabins:  
Main Deck:  
Lower Deck:

50m<sup>2</sup> bridge incorporating online and offline survey laboratories  
Maximum complement of 16  
Day room / TV lounge, mess, galley, lobby area with washroom, 4 twin cabins, toilets, laundry / drying room, 2 x workshops with toilet and shower.  
4 x twin cabins, sonar room, provisions room with freezers, generator and converter rooms.

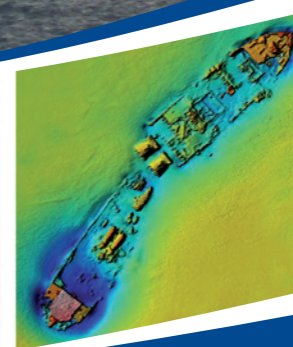
## Survey Permanent

### Fit

Positioning:  
Motion Reference:  
Echo Sounder:  
Multi-Beam:  
Side Scan Sonar:  
USBL:

C-Nav long range RTK centimetric accuracy.  
Ixsea Octans 4  
Ixsea Hydrins 3  
Knudsen 1602 heave compensated dual frequency  
RESON 7125 SV2 Ultra high resolution (200kHz & 400kHz) multi-beam echo sounder.  
Klein 3000 digital high resolution simultaneous dual frequency with magnetometer interface  
Sonardyne Scout USBL system with wide band beacons

# Survey Vessel Bibby Tethra



SV Bibby Tethra is a 27.5m purpose built semi-SWATH coastal survey vessel, which entered service in May 2011. The vessel provides an exceptionally stable working platform due to her advanced hull design and ultra quiet, extremely economical operating profile due to her diesel-electric propulsion system. Tethra offers a number of unique features for a vessel of this size, including Dynamic Positioning (DP1), dual propulsion systems and comfortable air-conditioned accommodation for up to sixteen.

Tel: +44 (0)151 328 1120  
E-Mail: [enquiries@osirisprojects.co.uk](mailto:enquiries@osirisprojects.co.uk)  
Web: [www.osirisprojects.co.uk](http://www.osirisprojects.co.uk)

 **OSIRIS PROJECTS**  
SEABED MAPPING & COASTAL SURVEY

 **OSIRIS PROJECTS**  
SEABED MAPPING & COASTAL SURVEY

Builder: Socarenam Boulogne, France  
 Launched: 2011  
 Length: 27.50m  
 Beam: 10.00m  
 Draught: 3.30m  
 Tonnage: 134 GT  
 Operating Code: MCA SCV Category 1 (150 miles from safe haven)  
 Class: Bureau Veritas - Special Service Oceanographic Research  
 Flag: British

### Propulsion

Main Propulsion: 2 x Cummins KTA19 M3 HD (477kW each) marine diesels driving fixed pitch 5 blade propellers through rigidly mounted Twin Disc MG516C gearboxes.

Secondary/Survey Propulsion: 2 x Diesel electric Schottel SPJ57 azimuth pump jets.

Bow Thrusters: 3 x 50kW each 480mm dia tunnel thrusters.

### Generators

Main Generators: 2 x Cummins QSM11 D (300kVA each) generators.  
 Deck / Workshop: 2x 415V 3 phase 63A 160kVA supplies.

### Tank Capacities

Gas Oil: 24m<sup>3</sup>  
 Fresh Water: 10m<sup>3</sup>  
 Seawater Ballast: 19.6m<sup>3</sup>

### Performance

Maximum Speed: 12 knots  
 Economical Speed: 10 knots  
 Survey Speed (max): 6 knots  
 Endurance: >10 days

Fuel Consumption at Transit Speed: 2.5m<sup>3</sup> / 24 hrs / 500km (main propulsion)

At Survey speed (4knots / 2m/s): 1.0m<sup>3</sup> / 24 hrs (secondary propulsion)  
 In DP: 2.0m<sup>3</sup> / 24 hrs. (station keeping).

### DP System

DP Type / Class: BV AM/AT – DP Class 1  
 Manufacturer: Sirehna, controlling primary and secondary propulsion systems

Modes: Helm Joystick with 3 external plug in remote locations. Station keeping, autotrack, auto-line, economical heading, autopilot, waypoint high speed.

Ref Sensors:
 

- 2 x dGPS
- 2 x Heading / Gyro
- 2 x MRU
- 1 x 2 axis speed log
- 2 x Wind Sensors
- 1 x USBL acoustic nav system.

### Nav aids & Communication

Radar: 2 x 94m Furuno FAR 2117 Black Box  
 Autopilot: Navico AP50 with remote control  
 ECDIS: Navmaster  
 AIS: Furuno FA150  
 dGPS: C&C Tech C-Nav 3050 and Furuno GP150

Echo Sounder: Furuno FE700  
 Heading: Ixsea Octans 4  
 Heading 2: Ixsea Hydrins 3  
 Speed Log: Skipper Electromagnetic Speed Log  
 Navtex: Furuno700B  
 Weather: 2 x Furuno WS200  
 VHF: 2x Icom 603 DSC  
 MF: Furuno FS1570  
 Satellite Comms: Furuno 250 Fleet Broadband  
 Furuno Felcom 15 Sat C

### Crane & Deck Equipment

Crane: MKG HMC201a5 18t/m hydraulic knuckle crane and integral winch  
 Max Lift: 5950kg at 2.8m.  
 Max Outreach: 14.35m with 910kg capacity.  
 Crane Winch: 4000kg with 30m/min recovery  
 Remote: Fully functional radio remote  
 Moonpool: 2m x 2m central moonpool  
 "A" Frame: Hydraulic 8000kg SWL with 6.5m deck clearance will lift over stern or through moonpool.  
 Winch: 8000kg line pull hydraulic winch  
 Sonar Winch: MacArtney "Cormac" 4 stainless steel sonar winch with remote control and programmable level wind. 1500m of 8.2mm side scan sonar cable.  
 Sonar Wells: 600mm x 500mm 'USBL' shaft in each hull for deployment of acoustic transducers below the keels.  
 Containers: Locking points for one ISO 20 foot container or one ISO 10 foot container on back deck.  
 Capstans: 2 x 2000kg line pull deck mounted capstans.

