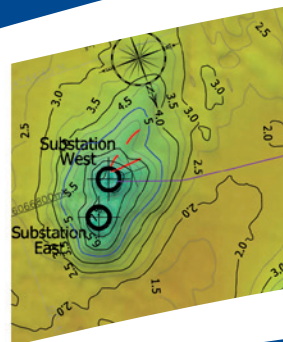
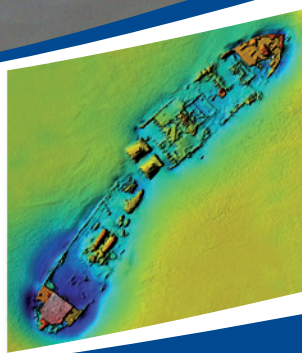


Survey Vessel Lia



SV Lia is a 15.3m purpose built aluminium survey catamaran launched in 2004. The vessel provides a fast, stable working platform for coastal survey operations, incorporating a moon pool, hydraulic crane and custom retractable transducer mounts for multi-beam work and USBL underwater positioning. Lia provides comfortable accommodation for extended daytime working with overnight accommodation for two crew on an occasional basis.



OSIRIS PROJECTS

SEABED MAPPING & COASTAL SURVEY

Designer:	Global Marine Design PTY, Henderson, Western Australia	
Builder:	Ali-It Marine Limited, Pembroke Dock, UK	
Launched:	July 2004	
Length:	15.30 Metres	
Beam:	5.60 Metres	
Draught:	0.85 Metres	
Tonnage:	22.5 GT	
Cruising Speed:	20 knots	
Maximum Range:	600 nautical miles	
Operating Code:	MCA Category 2 (60 miles from safe haven unrestricted)	
Flag:	British	
Max Personnel:	12 including crew (sleeping accomodation for 4)	
Fuel capacity:	3,000 litres	
Main Engines:	2 x Yanmar 6LY2 STP 440 h.p. Turbo charged 6 cylinder high speed diesels. ZF/Mathers Clear Command 'fly by wire' controls and engine/gearbox management system.	
Gearboxes:	ZF 110ATS 2-speed hydraulic gearboxes with electrically operated trolling valves for extended slow speed operation. High gear allows economical cruising at 20 knots.	
Hydrofoils:	Stainless steel hydrofoils fitted between the hulls to provide lift for increased cruising speed and dampening of low speed pitching motion.	
Generator:	Kohler 15.5kVa generator fitted with phase balancers for 240v operation, isolation transformer and UPS backup for all equipment.	
Inverter:	4500w pure sine wave inverter with smart transfer, charging and UPS.	
Crane:	Bonfiglioli P3500L hydraulic crane with maximum outreach of 6.25m (520kg) / 3.25m (990kg) and integrated 500kg rated winch carrying 90m of wire for instrument deployment.	
Moon Pool:	Centrally located 1.25m x 1.50m moon pool with 2 piece deck hatches and mounting brackets for transducers.	
Side Scan Winch:	Marine Winch Design - 3 phase variable speed electric sonar winch. 4 pole slip rings and 300m of armoured 6mm co-axial data cable with stainless steel deployment davit.	
Windlass:	Lofrans Titan 1.4 tonne capacity windlass.	
Rear Platform:	Stepped rear platform with double transom gate for easy access to water level for launch and recovery of equipment and divers. Open-sided full height dive ladder.	
Instrumentation:	CSi Vector Sensor dGPS and GPS Gyro system, Simrad CE54 combined chart plotter and echo sounder, Simrad RA50 high speed 36 mile radar, Simrad AP50 autopilot, Simrad IS15 log, Simrad EA400 dual frequency hydrographic echo sounder, Simrad DSC VHF, Simrad HT50 handheld VHF, Echo pilot forward-looking sonar.	
Tender:	Avon 3.5m RIB with 15hp outboard stored on wheelhouse roof.	